

# Exploring Butterfly Symmetry Using an Algorithm

Created by Deirdre Smith of JDaniel4's Mom

Name: \_\_\_\_\_

**when run** ▶

Draw a round head above the butterfly body.



Draw an antennae on either side of the head. Try to make them symmetrical.



Give the butterfly two eyes.



Color the pattern on the wing sections.



Color the pattern each of The lower wings.



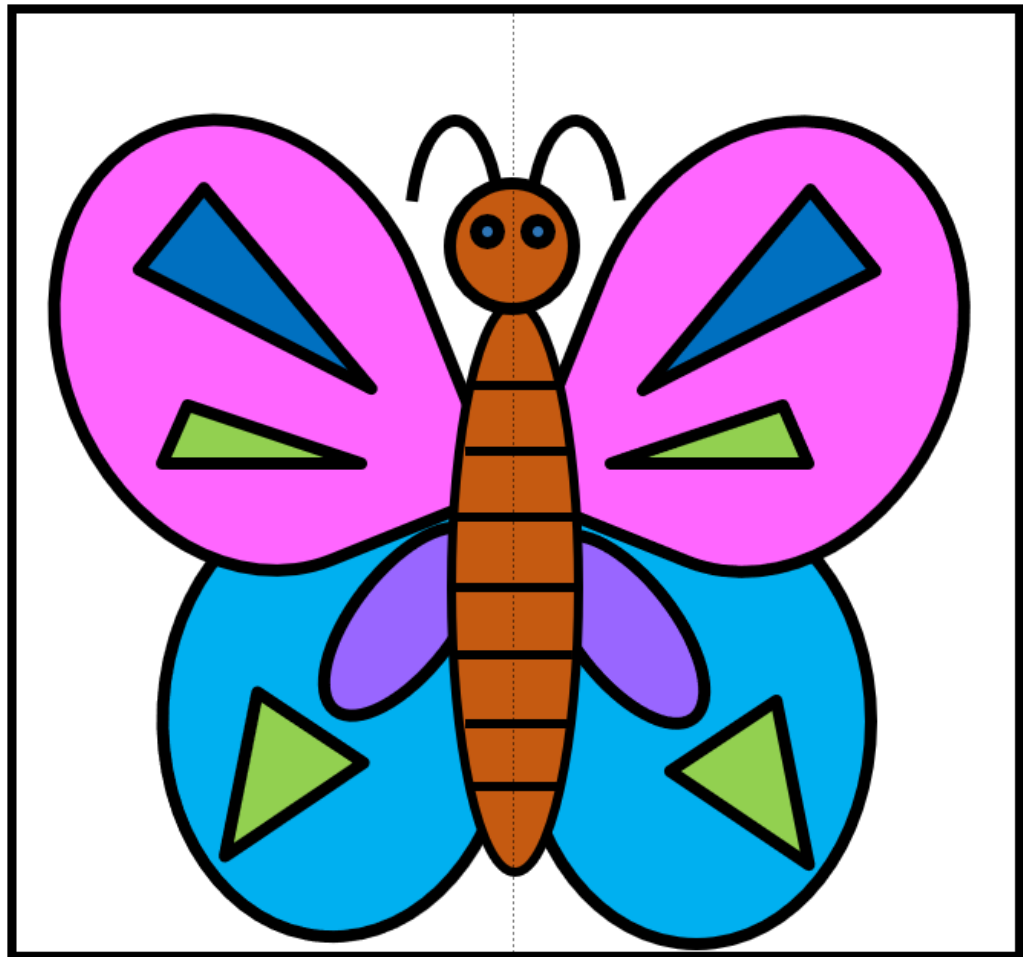
Draw vertical lines on the on the body of the butterfly.



Decorate the background.

## Exploring Butterfly Symmetry Using an Algorithm

Follow each step in the algorithm to create a symmetrical butterfly.



JDaniel4sMom.com

Name: \_\_\_\_\_

## when run



Draw a round head above the butterfly body.

Draw an antennae on either side of the head. Try to make sure they mirror each other.

Give the butterfly two eyes.

Draw a pattern each of the upper wings sections that mirrors the design on the other wing.

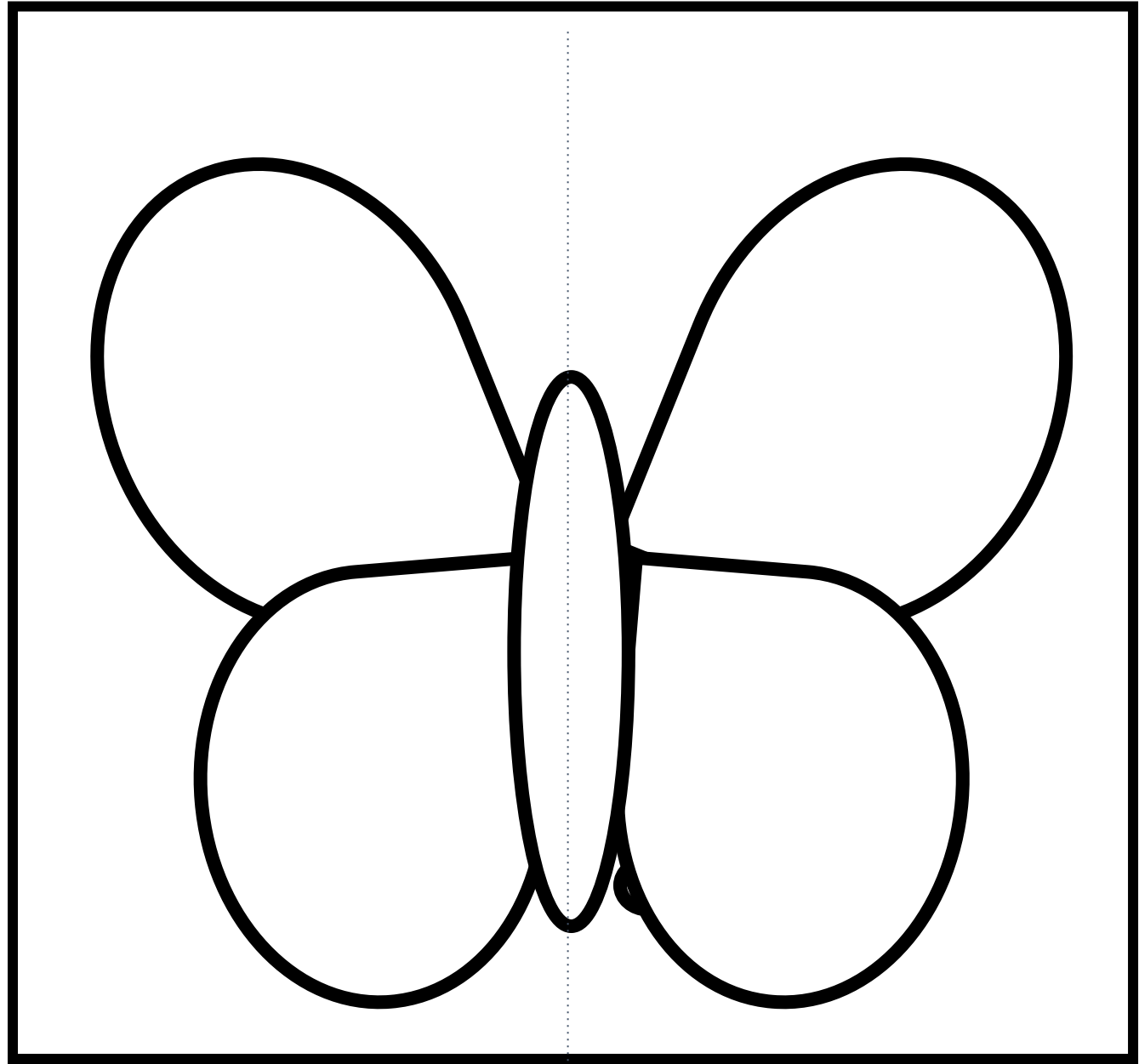
Draw a pattern each of the lower wing sections that mirrors the design on the other wing.

Draw vertical lines on the on the body of the butterfly.

Decorate the background.

## Exploring Butterfly Symmetry Using an Algorithm

Follow each step in the algorithm to create a symmetrical butterfly.



Name: \_\_\_\_\_

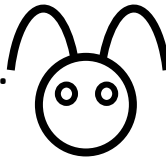
## when run



Draw a round head above the butterfly body.



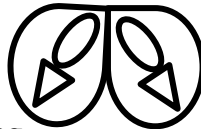
Draw an antennae on either side of the head. Try to make sure they mirror each other.



Give the butterfly two eyes.



Draw a pattern each of the upper wings that mirrors the design on the other wing.



Draw a pattern each of the lower wings that mirrors the design on the other wing.

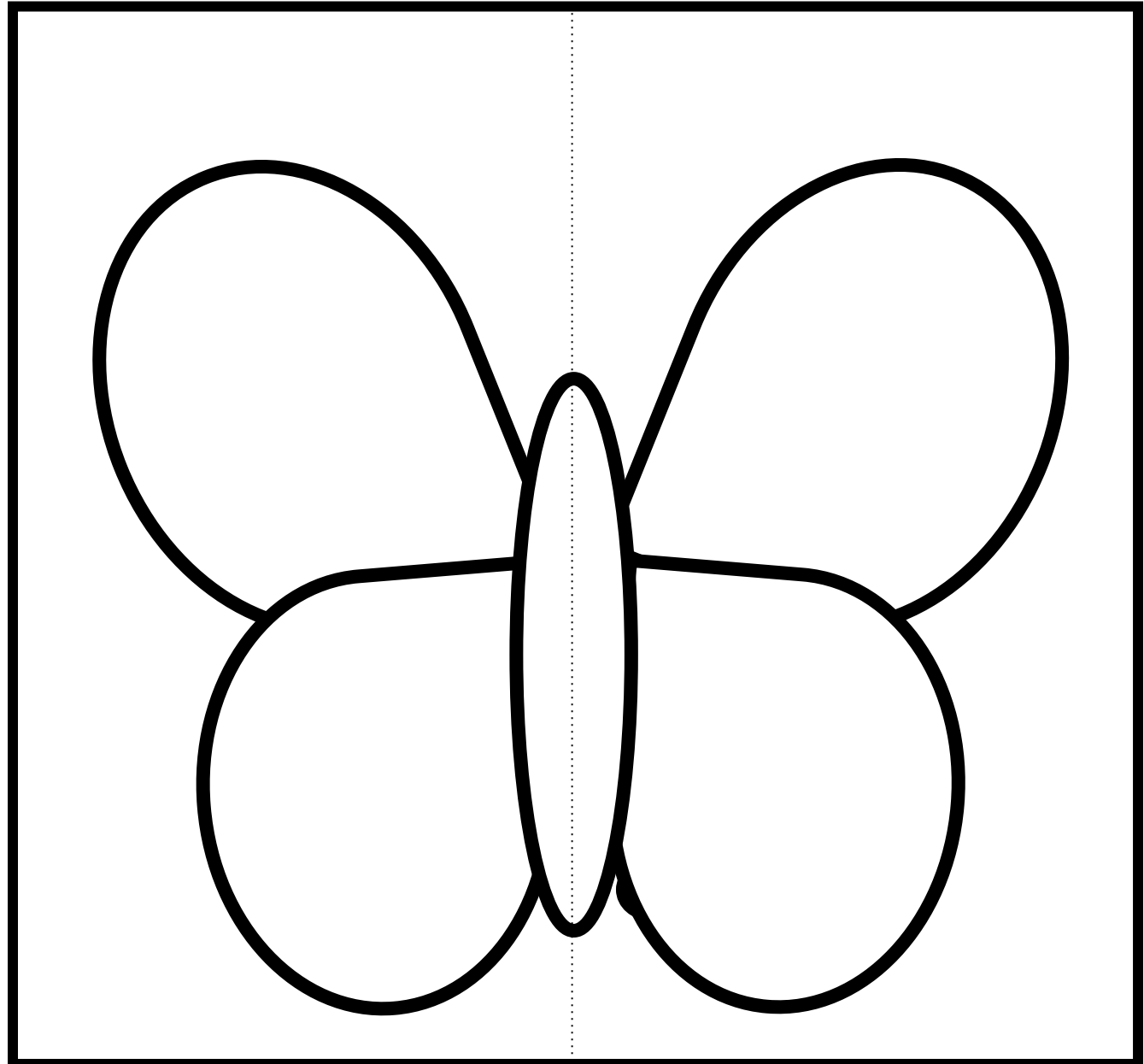


Draw vertical lines on the on the body of the butterfly.

Decorate the background.

## Exploring Butterfly Symmetry Using an Algorithm

Follow each step in the algorithm to create a symmetrical butterfly.



Name: \_\_\_\_\_

## when run

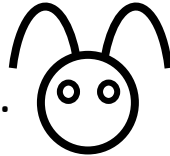
Draw a round head above the butterfly body.



Draw an antennae on either side of the head. Try to make them symmetrical.



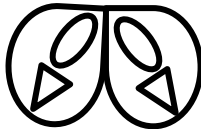
Give the butterfly two eyes.



Color the pattern on the wing sections.



Color the pattern each of The lower wings.



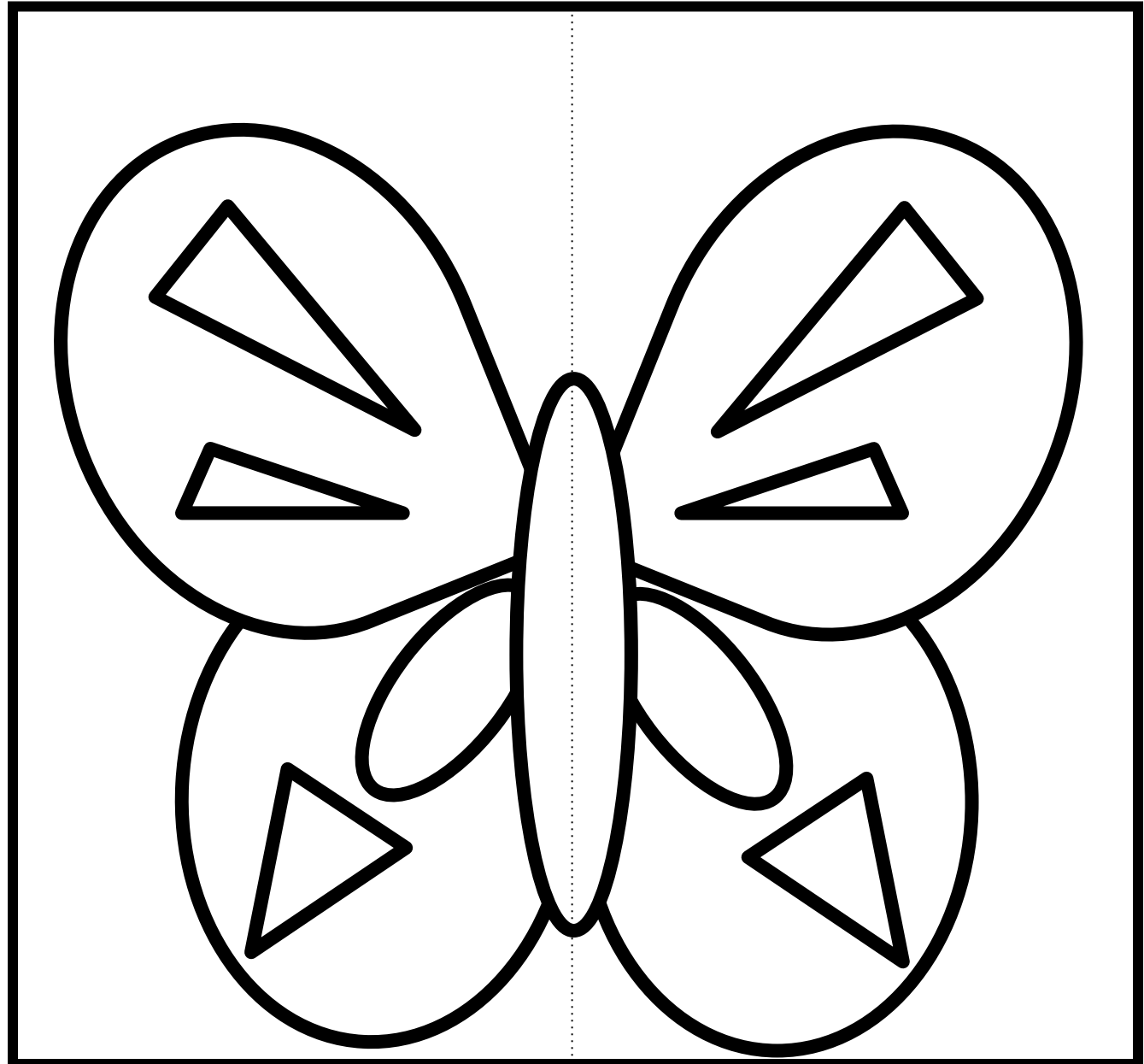
Draw vertical lines on the on the body of the butterfly.



Decorate the background.

## Exploring Butterfly Symmetry Using an Algorithm

Follow each step in the algorithm to create a symmetrical butterfly.



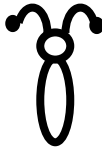
Name: \_\_\_\_\_

**when run**

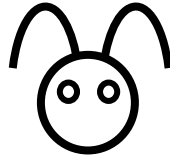
Color the butterfly's body.



Add circles to the ends of the antennae



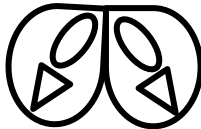
Color the butterfly's eyes.



Color the pattern on the wing sections.



Color the pattern each of The lower wings.



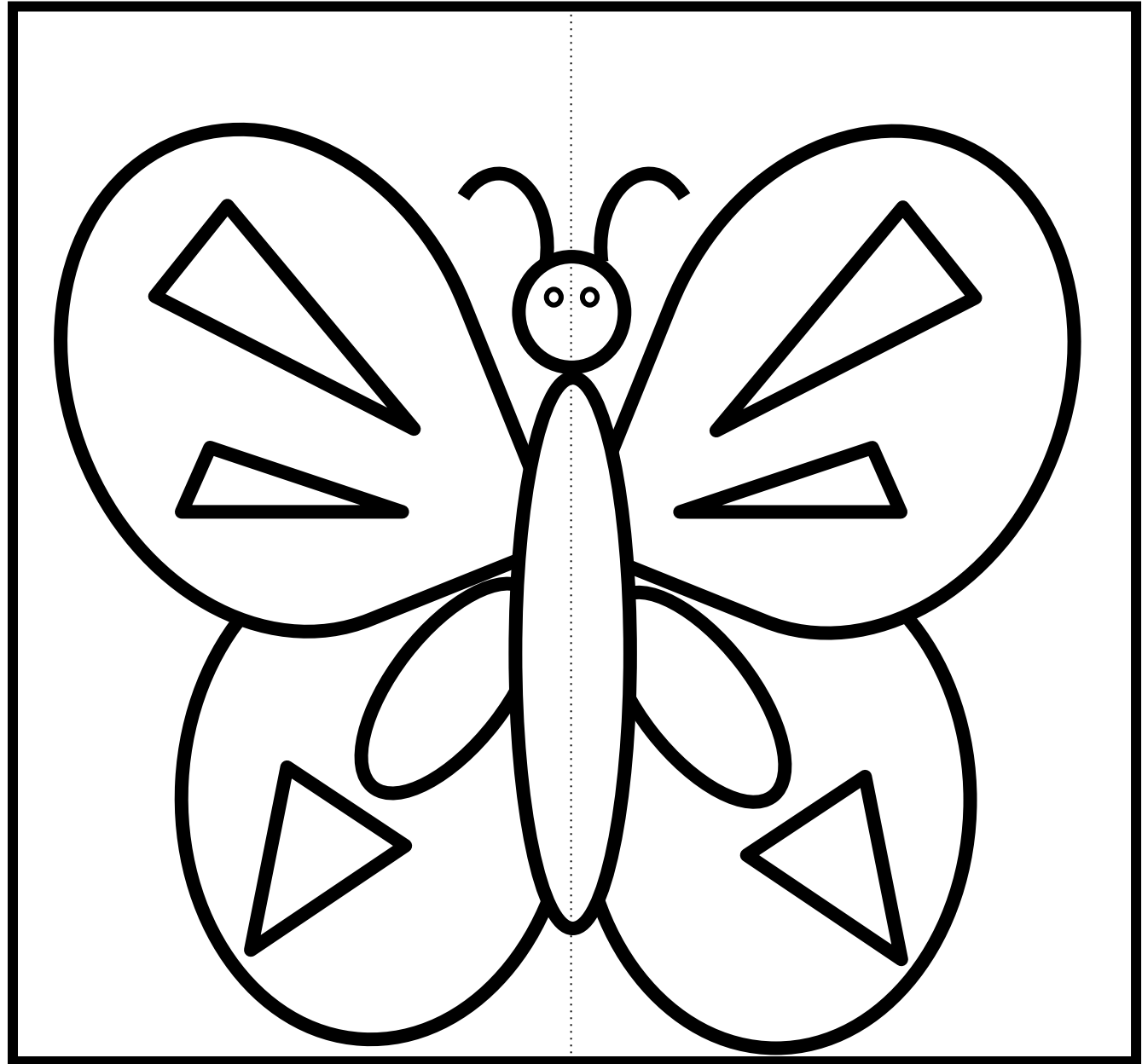
Draw vertical lines on the on the body of the butterfly.



Color the butterflies body.

## Exploring Butterfly Symmetry Using an Algorithm

Follow each step in the algorithm to create a symmetrical butterfly.



Name: \_\_\_\_\_

## when run

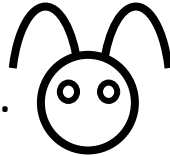
Draw a round head above the butterfly body.



Draw an antennae on either side of the head. Try to make them symmetrical.



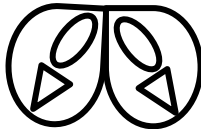
Give the butterfly two eyes.



Color the pattern on the wing sections.



Color the pattern each of The lower wings.



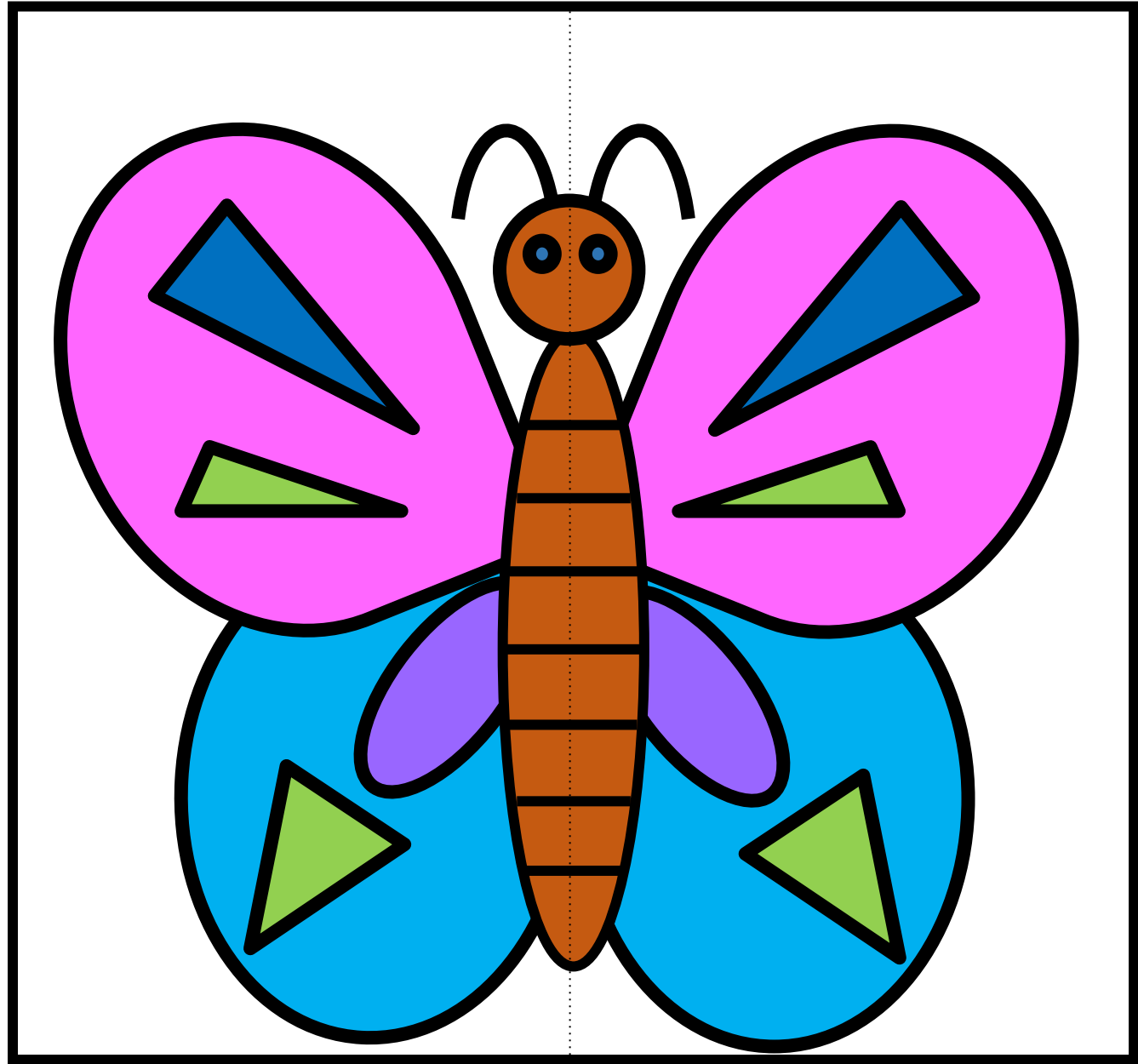
Draw vertical lines on the on the body of the butterfly.



Decorate the background.

## Exploring Butterfly Symmetry Using an Algorithm

Follow each step in the algorithm to create a symmetrical butterfly.





Thank you for downloading this set.  
I hope your children enjoy this JDaniel4's Mom resource.

You will find updates on my latest tools on the following:

Instagram: <https://www.instagram.com/jdaniel4smom>

Facebook: <https://www.facebook.com/jdaniel4smom/>

Twitter: <https://twitter.com/jdaniel4smom?lang=en>

Pinterest: <https://www.pinterest.com/jdaniel4smom>

### **What is in the set?**

- **4 Butterfly Symmetry Algorithm Pages**
- **1 Sample of a Completed Page**

### **Clip Art is From:**

